

CEP Alumni Association

The alumni association provides a channel for communication between the students and Bard CEP, oversees alumni events and reunions, maintains contact and employment information, and provides professional and networking support for past CEP and GSES graduate students.



Contributors:

The Bard CEP alumni panel is made possible by the generous support of our alumni panelists: Jackson Morris, Katrina Shindledecker, Ben Hoen and Lindsey Lusher Shute. A big thanks as well to Bard CEP staff, Josephine French and Molly Williams, for coordinating the logistics of this event.

We want your feedback. Please fill out the evaluations after the event to assist us in offering you the best events.

Bard  **CEP**
CENTER FOR ENVIRONMENTAL POLICY

Bard College
Annandale-on-Hudson, New York
web www.bard.edu/cep/alumni
e-mail cep@bard.edu
tel 845.758.7071



2011

Bard CEP presents:

an Alumni Panel

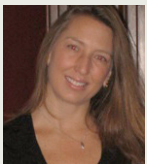
August 26, 2011: 9am - 12pm
Manor House



Jackson Morris M.S. '07
Senior Policy Advisor
Pace Energy and Climate Center

Jackson Morris joined the Pace Energy and Climate Center in November 2009 as Senior Policy Advisor. Based in Albany, he represents the Center in advancing clean energy policies in the state capital, through direct engagement with state agencies, the Executive Chamber, the New York State legislature, and the New York Independent System Operator (NYISO), as well as working with other energy, environmental, health and consumer organizations. Mr. Morris works to further the Center's mission by advocating for policies that will reduce the state's greenhouse gas emissions, increase investments in energy efficiency, and aid in New York's transition to a clean energy economy.

Mr. Morris holds a B.A. in sociology and certificates in primatology and in markets and management from Duke University, as well as an M.S. in environmental policy from Bard Center for Environmental Policy. He has taught environmental science at bilingual schools in the Caribbean and studied sustainable development in Central America. In his former position as Air & Energy Program Director at Environmental Advocates of New York, he worked on complex air quality and energy issues with several broad coalitions to effectively implement the Regional Greenhouse Gas Initiative, Energy Efficiency and Renewable Portfolio Standards, as well as a wide array of clean energy and efficiency projects in Albany.



Katrina Shindledecker M.S. '06
Director of Land Preservation
Hudson Highlands Land Trust

Katrina Shindledecker is Director of Land Preservation at the Hudson Highlands Land Trust (HHLT) in Garrison, NY. In this capacity, Katrina is responsible for directing and implementing the land trusts acquisition and stewardship program. She is involved in local land use and acts as the community liaison for the land trust on natural resource issues. Additionally, Katrina is the President of Friends of Fahnestock & Hudson Highlands State Parks, a 501(c)(3) organization founded to support the stewardship of the park's natural and historical resources, as well as educational and recreational opportunities for the public.

From 2000 through 2004, Katrina worked for the New York State Office of Parks, Recreation and Historic Preservation (OPRHP) at the Rockefeller State Park Preserve in Mount Pleasant, NY, where she acted as the Director of Natural Resources. In 2005, Katrina's role with OPRHP was expanded to include natural resource initiatives and environmental compliance for the Taconic region, which comprises 15 parks and 5 historic sites. After Graduating from Bard CEP

in 2006, Katrina continued her work until September 2007 at the OPRHP regional office while volunteering at local land trusts. Katrina earned a B.S. from Eckerd College in psychology and an M.A. from Pace University in environmental science. In 2006, Katrina graduated from Bard CEP with an M.S. in environmental policy where she completed a thesis on "Land Transactions: Policies and Practices of Land Trusts in the Hudson Valley."



Lindsey Lusher Shute M.S. '07
Executive Director, National Young Farmers
Coalition and Director of State Policy,
Transportation Alternatives

Since 2007, Lindsey has worked for Transportation Alternatives, a non-profit advocacy organization whose mission is to reclaim New York City's streets from the automobile, and to advocate for bicycling, walking and public transit as the best transportation alternatives. As Director of State Policy, Lindsey helped pass pedestrian safety and public transportation improvement bills in New York State. As Executive Director of the National Young Farmers Organization, Lindsey advocated for a new microloan program at USDA. Lindsey also contributes on agricultural policy to *Grist*.

Lindsey holds a Bachelor of Fine Arts from New York University and an M.S. in environmental policy from Bard Center for Environmental Policy. While at Bard, Lindsey was the recipient of a LUCE Learning Across Borders fellowship for her internship in Oaxaca, Mexico with El Instituto de la Naturaleza y la Sociedad de Oaxaca (The Institute for Nature and Society).



Ben Hoen M.S. '06
Principal Research Associate
Lawrence Berkeley National Laboratory

Ben Hoen is a researcher at Lawrence Berkeley National Laboratory, concentrating primarily on the investigation of individual and community responses to a number of different renewable energy sources, such as large scale wind and residential solar. In 2009, Ben completed a multi-year study investigating the effects that nearby wind facilities have on surrounding property values, and since has continued this work as part of a team investigating noise and annoyance issues surrounding existing wind facilities in the US. He is co-authors on a number of LBNL report's and journal articles and is ask to speak frequently on the subject of renewable energy and public acceptance. He holds Bachelors degrees in Finance and General Business, and a Master of Science Degree in Environmental Policy.