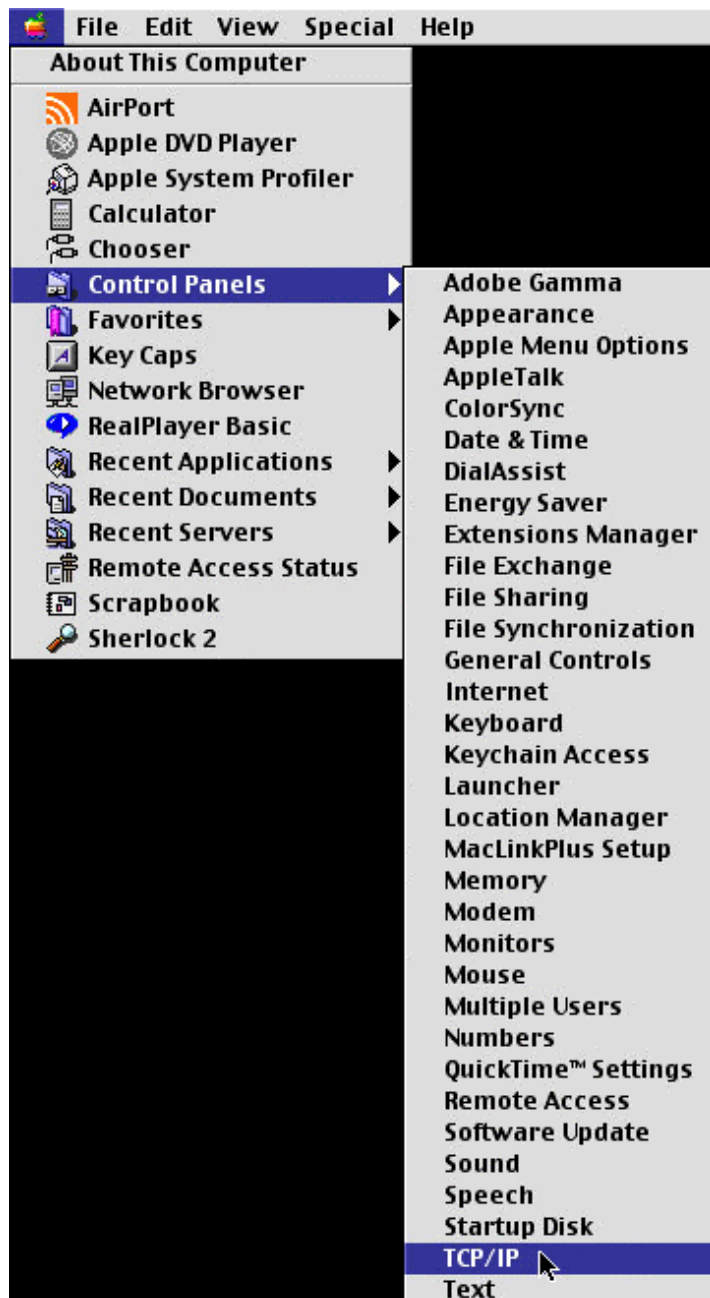
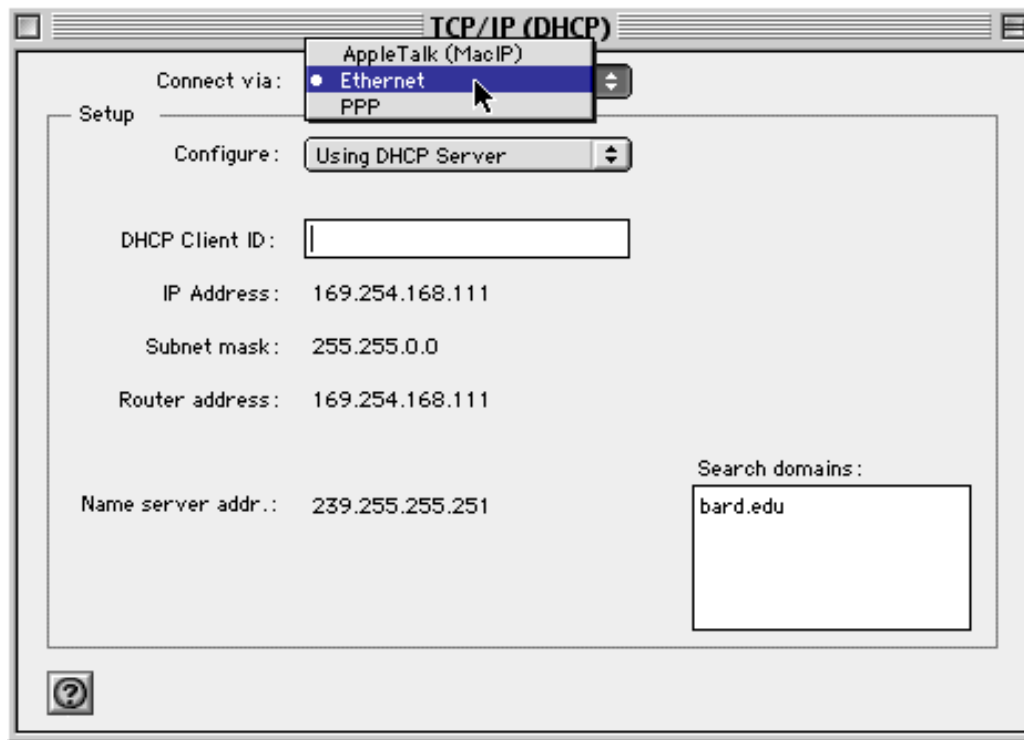


Setting Up ResNet On a Macintosh (OS8 or Higher) at Bard Helpdesk x7500

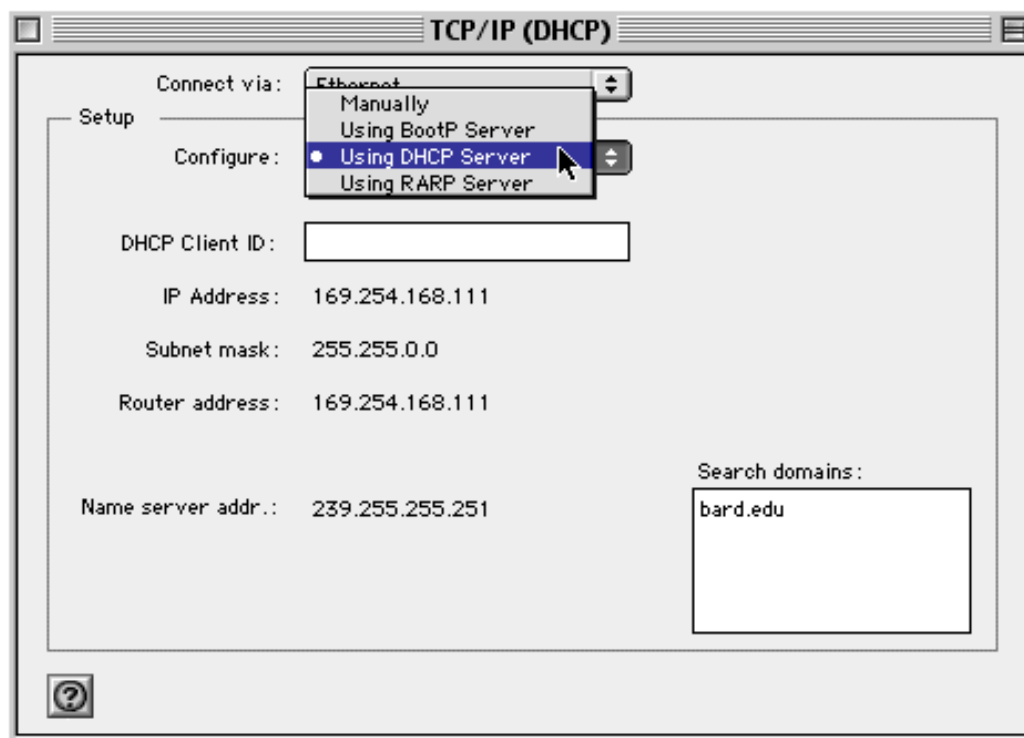
1) From the "Apple" menu, open the TCP/IP control panel.



2) Choose "Ethernet" from the pull-down menu next to "Connect via:"



3) Choose "Using DHCP Server" from the pull-down menu next to "Configure:"



4) Done!